

XYR 5000

Wireless Management Toolkit

34-XY-01-06 10/2003
GUIDE

PRODUCT SPECIFICATION AND MODEL SELECTION

Function

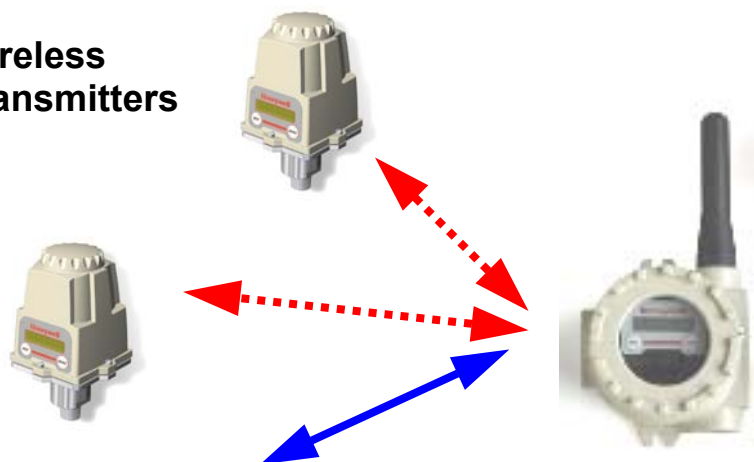
The Wireless Management Toolkit is part of the XYR 5000 family of wireless products. This Toolkit is the services management software for the Wireless product family. Services management includes XYR 5000 component management (such as configuring the Quad Analog Output Modules, and field unit threshold settings), process monitoring in real time, and data acquisition.

The software Performance Management, Configuration Management, Reporting and Analysis, and combines Fault Reporting.

Enjoy the benefits of wireless technology today:

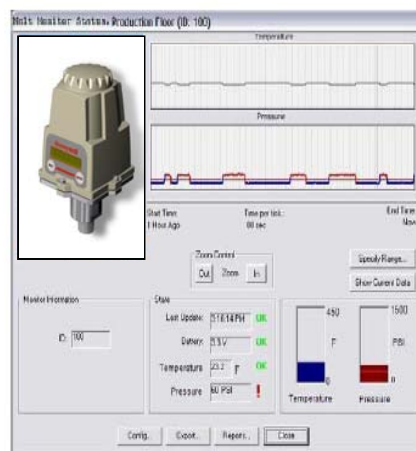
Improve Product Quality, Ensure High Uptime, Reduce Maintenance and Operational Costs, Meet Regulatory Requirements, and Enhance Flexibility.

Wireless Transmitters



Base Radio

- RS-485
- 4-20mA
- RS-232



Wireless Management Toolkit

Model	WMSW1 (Wireless Configuration and Data Acquisition Software)
--------------	---

SOFTWARE

Architecture	Microsoft Windows based client/server software. Embedded Microsoft Access database.
---------------------	--

SYSTEM REQUIREMENTS

PC	<ul style="list-style-type: none">• 300 MHz or higher processor clock speed recommended.• Intel Pentium/Celeron Family, or AMD K6/Athlon/Duron Family, or compatible processor recommended.• Microsoft Windows 98 Second Edition, Windows 2000, or Windows XP Operating System.• 256 MB of RAM or higher recommended.• 10 GB if the database is installed on the local PC.• RS-485 port or RS-232 serial port.• Super VGA (800 X 600) or Higher-Resolution video adapter and monitor.• CD-ROM or DVD Drive.• Keyboard and Microsoft mouse or compatible pointing device.
-----------	--

SOFTWARE FEATURES

Fault and Performance Management	<ul style="list-style-type: none">• Field Unit Groups.• Field Unit View. (Tag Number [up to 21 characters], Monitored Asset, Unit ID, Device Type, Status).• Field Unit Status View. (OK, Threshold Alert, RF Failure, Low Battery).• Base Radio View. (Tag number [up to 21 characters], Serial Number, RS-485 Address, Number of Field Units, 4 – 20 mA Output, Status).• Output Devices.
Configuration Management (Field Unit Variables)	<ul style="list-style-type: none">• Sensor Sampling. (Heartbeat, Normal, Thresholds).• Thresholds. (High and Low Thresholds, Custom Threshold Message).
Reporting and Analysis	<ul style="list-style-type: none">• Database values contain the asset conditions over time. Data can be exported to perform analysis and create reports. Export data formats: Text (.txt). Comma Separate Values (.csv).

Model Selection Guide

XYR 5000 Wireless Management Toolkit

Model Selection Guide
34-XY-16-06 Issue 0

Honeywell Confidential & Proprietary

Instructions

- Select the desired key number.

Key Number

KEY NUMBER

Selection

Description	
Wireless Configuration and Data Acquisition Software	WMSW1

Note: Requires Wireless Base Radio Model WBR (see 34-XW-01-05)

Honeywell

Industrial Measurement and Control
Honeywell International Inc.
2500 West Union Hills Drive
Phoenix, Arizona 85027

©Honeywell International Inc.